



Western Drug Distribution Center Limited

Business Number 105636054

Warehouse and Distribution

Edmonton, Alberta

Report on Fighting Against Forced Labour and Child Labour in Supply Chains Act  
(Fiscal 2025)

## 1.0 STRUCTURE, ACTIVITIES AND SUPPLY CHAIN

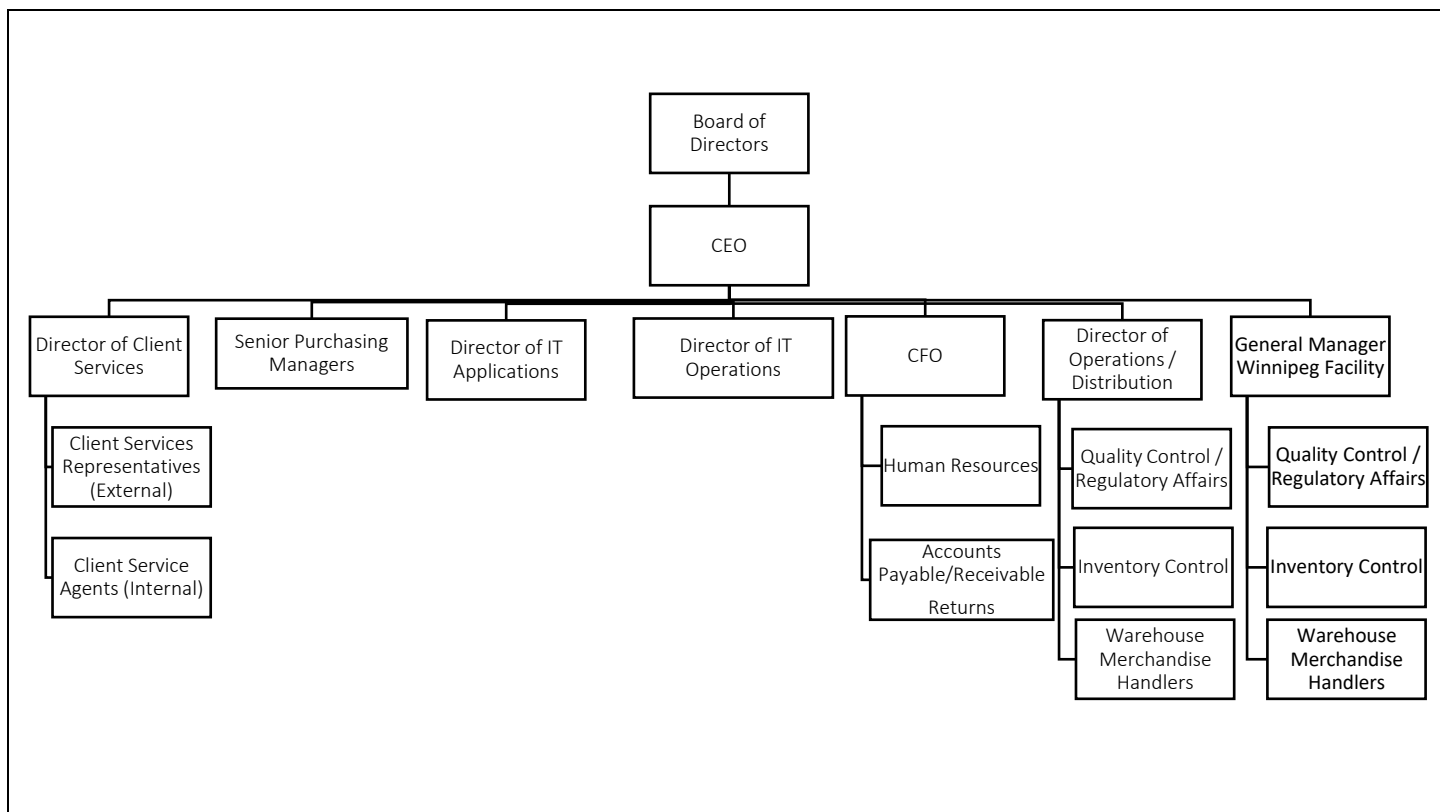
### 1.1 Overview

Western Drug Distribution Center Limited (WDDC) is a veterinary owned distribution company. The cooperative was established in September of 1983. WDDC's head office is in Edmonton, Alberta, and it has a branch office in Winnipeg, Manitoba. From these two distribution facilities it supplies product to veterinary clinics, teaching facilities and government agencies across Western Canada, Northern Ontario, and the Territories. It strives to be the one stop shop for its members, supplying a complete range of product that includes pharmaceuticals, vaccines, medical supplies, pet nutrition, retail, and consumable items. WDDC also provides healthcare suppliers and manufactures with distribution and 3PL services across Canada.

### 1.2 Organizational structure (i.e., departmentation, chain of command, etc.)

We are led by a nine-member Board of Directors and CEO. The Board of Directors are all actively practicing veterinarians from across Western Canada. WDDC's members/shareholders must be licensed Doctor/s of Veterinary Medicine, in good standing with the provincial veterinary medical association within the province they are practicing.

WDDC's leadership consists of our Board of Directors, our CEO and seven senior department heads. The departments are comprised of Finance, Edmonton Operations and Distribution, Client Services, Purchasing, Information Technology Operations, Information Technology Applications and Winnipeg Operations.



*WDDC Organizational Structure*

### 1.3 Organizational Mandate

Core Mission – To enhance the economic and professional wellbeing of our members by providing them with the most effective delivery of products and services.

### 1.4 Activities

WDDC provides wholesale service for its members across Western Canada, Northern Ontario and the Territories and offers suppliers and manufactures with both distribution and 3PL services across Canada.

### 1.5 Supply Chain

WDDC sources products from suppliers and manufacturers across North America and Europe. We presently carry approximately 22,000 products from 328 companies. Of the companies we purchase product from, 262 are in Canada and 66 from Europe and the United States.

## 2.0 POLICIES AND DUE DILIGENCE PROCESSES

As of our Fiscal Year end (June 30, 2025), WDDC maintained policies and processes to address forced and child labour in our supply chains. We have policies on forced labour and child labour in supply chains, anti-bribery, anti-corruption, and compliance with the Human Rights Code.

As a wholesaler, it is important for us to gather and consolidate information from our suppliers regarding their risks related to forced and child labour. Our procedures incorporate our commitment to this act including responsibilities, risk identification, risk mitigation, communication, and effectiveness tracking.

### 3.0 FORCED LABOUR AND CHILD LABOUR RISKS

WDDC has taken a risk-based approach to identifying potential risks of forced labour or child labour. As a wholesaler, the majority of our suppliers are also reporting entities under this act. Therefore, our risk-based approach will first focus on the mapping of our suppliers by country of origin from where we receive the product. We identify all the suppliers we import products from. We have sent letters to all currently active companies asking that they attest that none of the products purchased from them are manufactured or supplied using forced labour or child labour. All companies that we presently purchase products from have attested to this. This requirement has been incorporated into our new vendor setup form. This will ensure that no new suppliers will be set up unless they attest that they do not use forced labour or child labour in the manufacture or supply of the products we intend to purchase.

### 4.0 REMEDIATION MEASURES AND REMEDIATION OF LOSS OF INCOME

Within this reporting period (Fiscal year, July 1, 2024 to June 30, 2025), WDDC has not identified any risks of forced or child labour, therefore, no measures have been taken to remediate forced or child labour or remediate potential loss of income for vulnerable families.

### 5.0 TRAINING

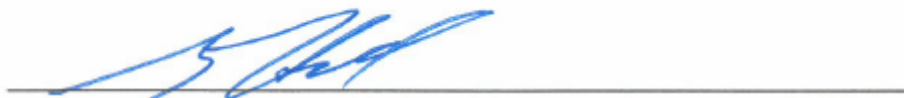
WDDC has policies in place with respect to forced labour and child labour and these policies have been included in our employee manual. All current employees have received this training. All new employees receive training upon hire.

### 6.0 EFFECTIVENESS

WDDC continues to reach out to all suppliers we presently import products from and have satisfied ourselves that they are not using forced labour or child labour in the manufacture of products or their supply chains. All new vendor set up forms include this requirement. Policies developed have been shared with all staff.

### 7.0 APPROVAL

In accordance with the requirements of the Act, and in particular section 11 thereof, I attest that I have reviewed the information contained in the report for Western Drug Distribution Center Limited. Based on my knowledge, and having exercised reasonable diligence, I attest that the information in the report is true, accurate and complete in all material respects for the purposes of the Act, for the reporting year listed above.



Greg Hall President / CEO

June 30, 2025

Date

"I have the authority to bind Western Drug Distribution Center Limited"